

92 NORTH 6TH STREET

South Block between Berry Street & Wythe Avenue





PREMISES

Ground Floor – 3,700 SF		TOTAL – 11,100 SF
Second Floor – 3,700 SF		
Cellar – 3,700 SF		

Frontage		50'3" on North 6th Steet
Ceiling Height		11'11" on Ground Floor
		11" on Second Floor

Possession		Arranged
Currently		H&M

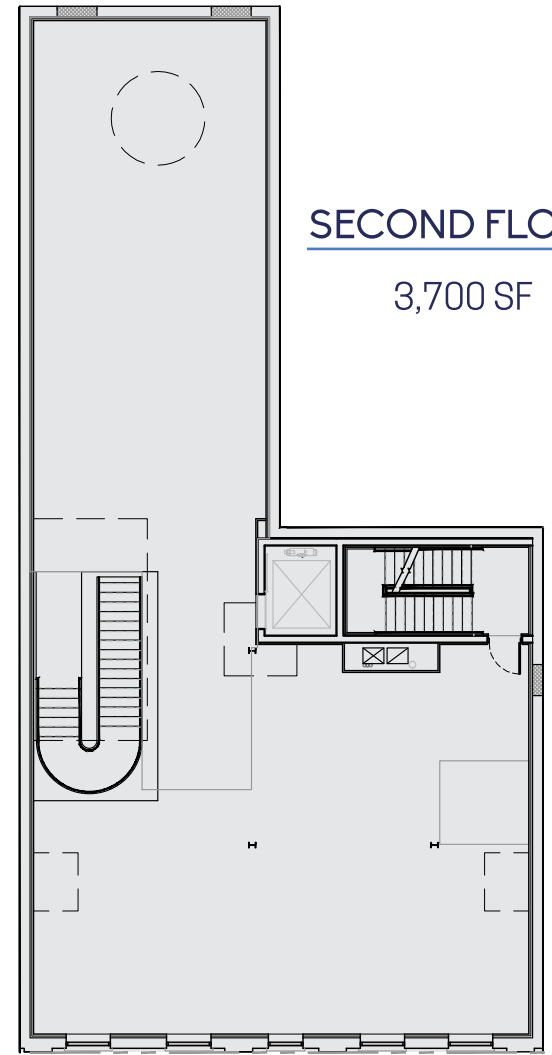
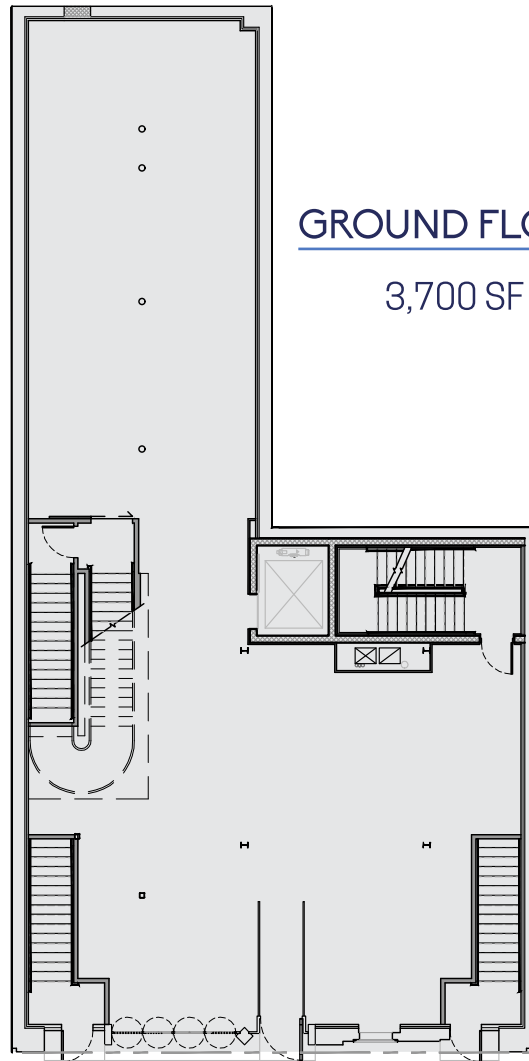
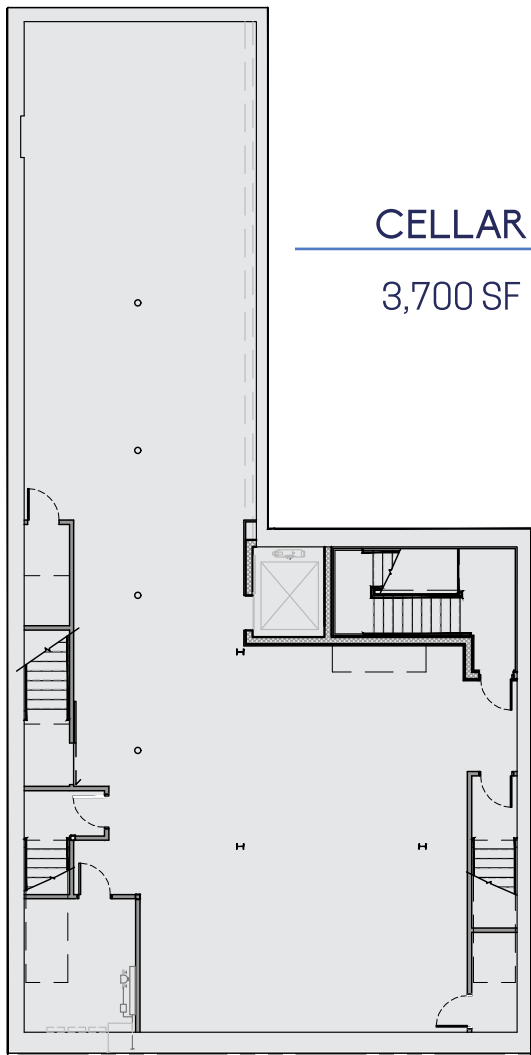
NEIGHBORING TENANTS

Glossier ▪ Google ▪ Everlane ▪ Nike by Williamsburg
Lululemon ▪ Warby Parker ▪ Madewell ▪ Hermès*
ON Running* ▪ Mejuri* ▪ Chanel Beauty* ▪ Byredo*

**Coming Soon*

COMMENTS

- Full building branding opportunity
- All uses considered



North 6th Street

Williamsburg, Brooklyn



92 NORTH 6TH STREET

MATTHEW SEIGEL
matthew@lanterncompany.com

SKYE TAYLOR
skye@lanterncompany.com

+1 (646) 970-3223
www.lanterncompany.com

KEY:

Redevelopment / Development

Coming Soon