



**816**  
**MADISON**  
**AVENUE**

West Block between E. 68<sup>th</sup> & E. 69<sup>th</sup> Streets



RETAIL FOR LEASE



RETAIL FOR LEASE



**Lantern**

Real Estate Advisors + Partners

## PREMISES

GROUND FLOOR **2,163** SF  
LOWER LEVEL **1,865** SF  
CEILING HEIGHTS **10'**  
POSSESSION **IMMEDIATE**

## NEIGHBORING RETAILERS

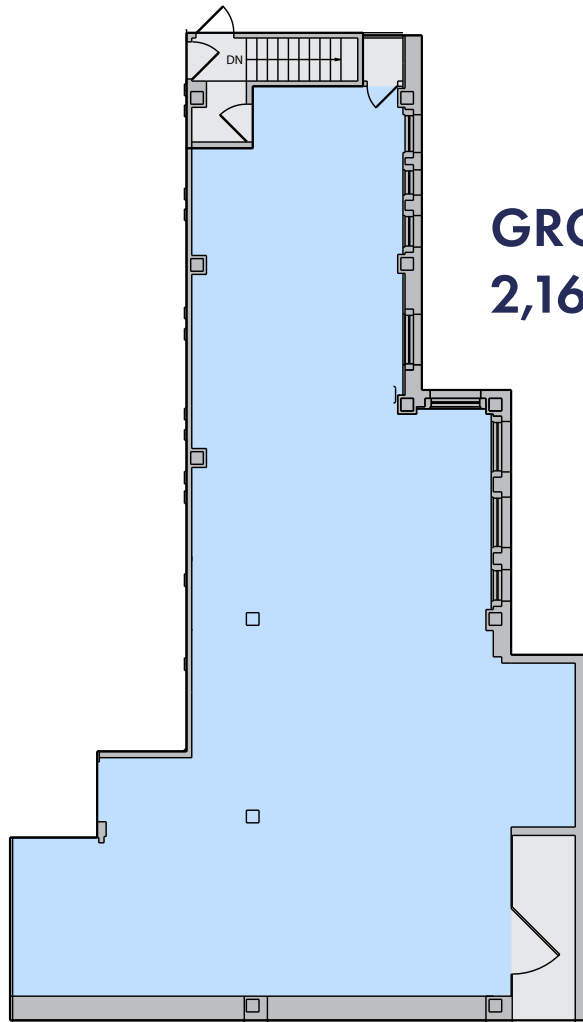
MACKAGE • MAX MARA • ANINE BING  
LADURÉE • J. MENDEL/DENNIS BASSO  
MARNI • DOLCE & GABBANA  
MONIQUE LHUILLIER • SEAMAN SCHEPPS



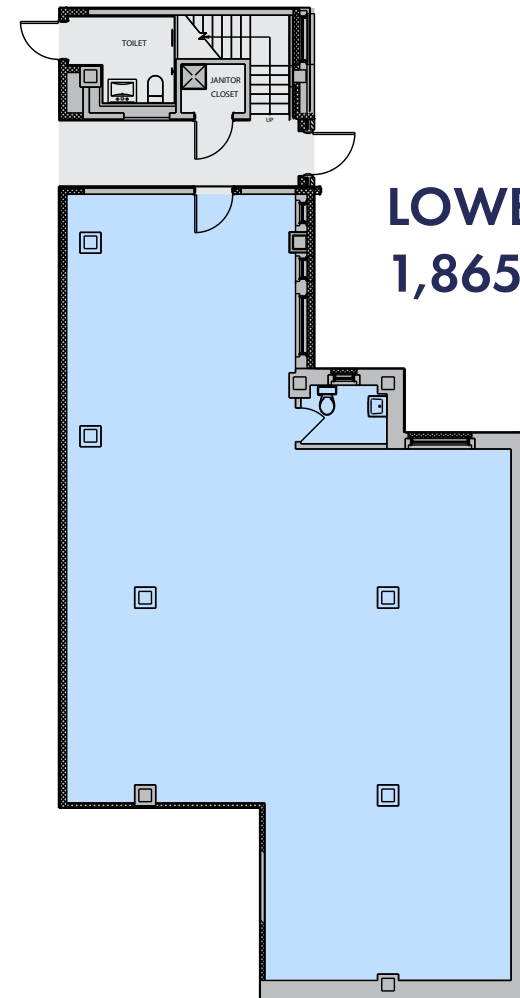
**40'** FRONTAGE ON MADISON AVENUE

# COMMENTS

- Highly coveted Madison Avenue location with incredible frontage
- Situated amongst global luxury retailers
- Directly adjacent to Mackage and Monique Lhuillier; prime co-tenancy for menswear, eveningwear, and lifestyle tenants
- Open to all uses, including café and bakery uses
- One block from Central Park



**GROUND FLOOR**  
**2,163 SF**



**LOWER LEVEL**  
**1,865 SF**

MADISON AVENUE



E. 71<sup>st</sup> St.

TheRealReal  
*CHROME HEARTS*  
 LADURÉE  
*Paris*  
 ELIE SAAB

LANVIN  
 JOHN ELLIOTT  
 OFFICINE GÉNÉRALE  
 LANVIN  
 ZADIG & VOLTAIRE

E. 70<sup>th</sup> St.

*5 Hertford Street*  
 A PRIVATE CLUB  
 \*Coming Soon

PRADA  
 A-K-R-I-S-  
 JONATHAN COHEN  
 A-K-R-I-S-

E. 69<sup>th</sup> St.

SEAMAN SCHEPPS  
**MARNI**  
 DOLCE & GABBANA  
 CAMILLA DIETZ BERGERON  
*Monique Lhuillier*  
  
 MACKAGE

MADISON AVE.

DOLCE & GABBANA  
 J. MENDEL / DENNIS BASSO  
 PARIS / HANDMADE IN NEW YORK CITY  
 VALENTINO  
 ISAIA  
 ACHILLE SALVAGNI ATELIER  
 MARINA RINALDI  
 MaxMara

E. 68<sup>th</sup> St.

OLIVER PEOPLES  
 COVYEN  
 FRETTE  
 1860  
*John Paul Ataker*  
 New York  
 CAROLINA HERRERA  
*Cosme Armani*  
 CREED  
 1760

LAFONDE BOUTIQUE  
 NARDOS  
*Nardos Design*  
*Bonpoint*  
 ANINE BING

E. 67<sup>th</sup> St.

MICHAEL KORS  
 ROBERT MARC NYC  
 ELEUTERI  
*Dream date Paris*

OPERA GALLERY  
 TRAUMSAFE  
  
 FRED LEIGHTON

E. 66<sup>th</sup> St.

MATTHEW SEIGEL  
 matthew@lanterncompany.com

JUSTIN ABIZADEH  
 justin@lanterncompany.com

SARA ARMET  
 sara@lanterncompany.com

+1 (646) 970-3223  
 www.lanterncompany.com

**Lantern**  
 Real Estate Advisors + Partners