

Presenting...  
an Exceptional  
Retail Opportunity

695  
MADISON  
AVENUE





Ground Floor **4,933 SF**  
12'4" Ceiling Height

Lower Level **5,010 SF**  
9'9" Ceiling Height

Second Floor **4,928 SF**  
12'2" Ceiling Height

Third Floor **4,234 SF with 734 SF terrace**  
10'6" Ceiling Height

Fourth Floor **4,234 SF**  
9'7" Ceiling Height

Frontage **61'** on Madison Avenue  
**61'** on East 62<sup>nd</sup> Street

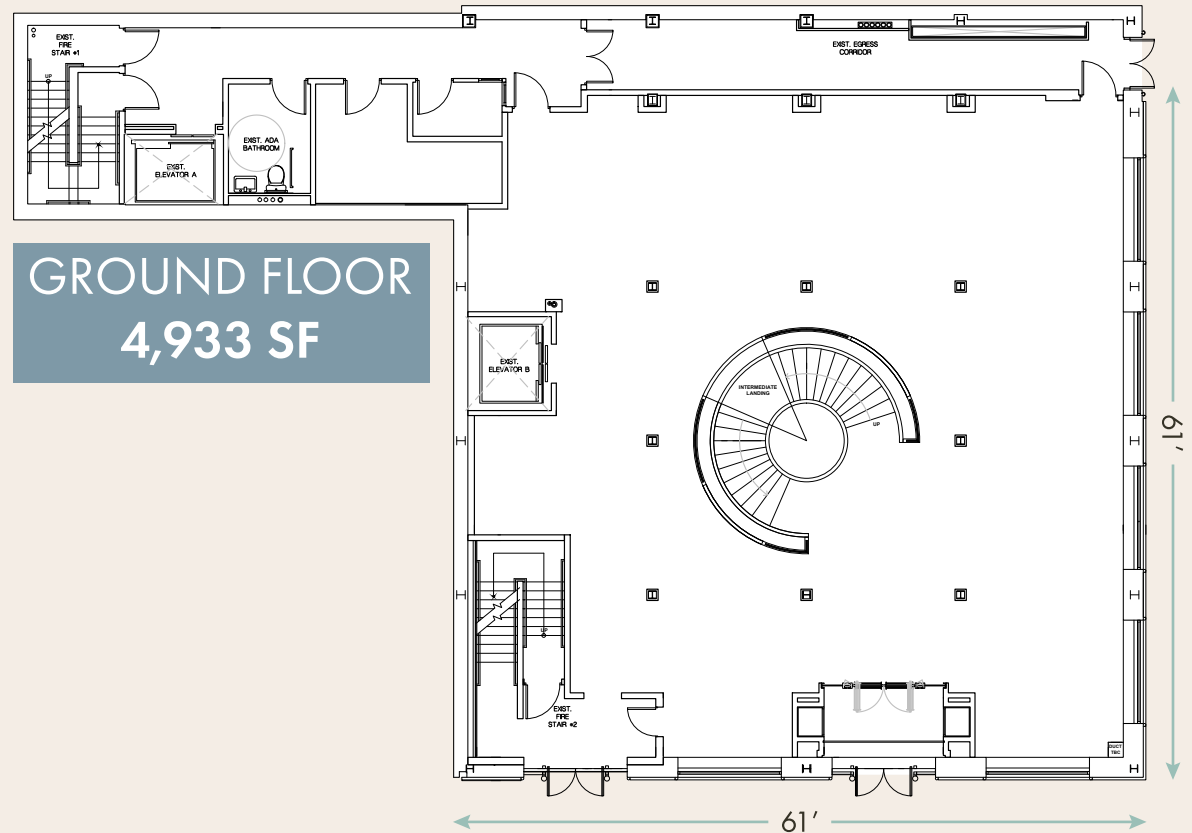
Possession **Immediate**

Previous Tenant **Hermès**

Neighboring Tenants **Hermès, Tom Ford, Jimmy Choo  
Brioni, Panerai, Chloé, Chanel  
Graff, Bottega Veneta, Valentino  
Marc Jacobs, Loro Piana, Versace**

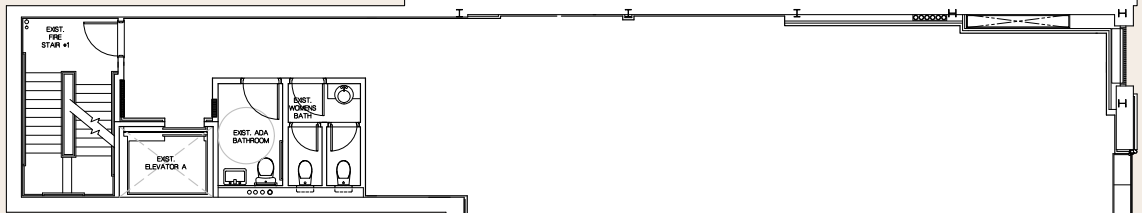
**First time available in 25 years!**

**GROUND FLOOR**  
**4,933 SF**

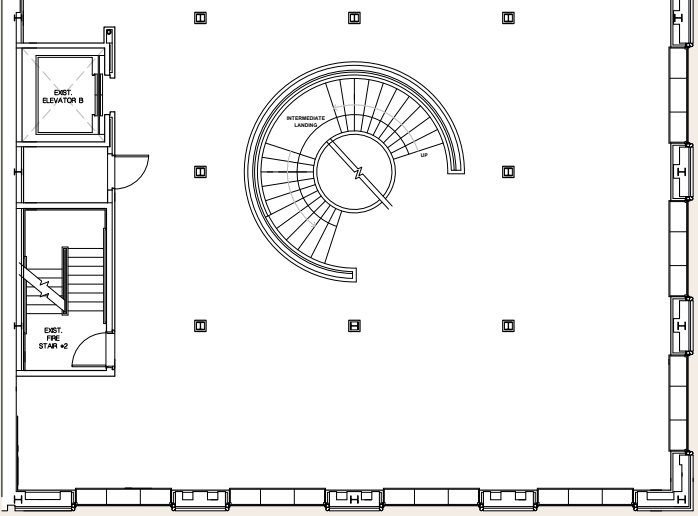


**MADISON AVENUE**

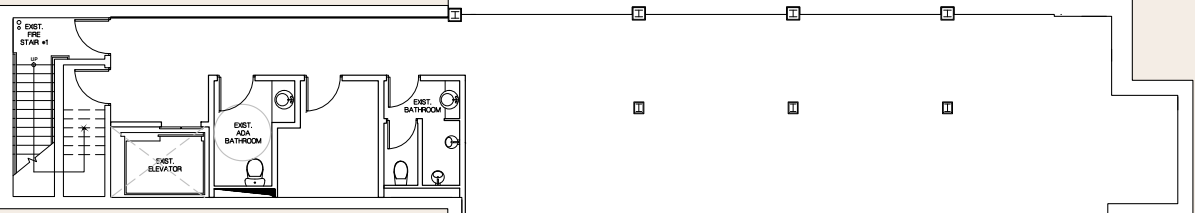




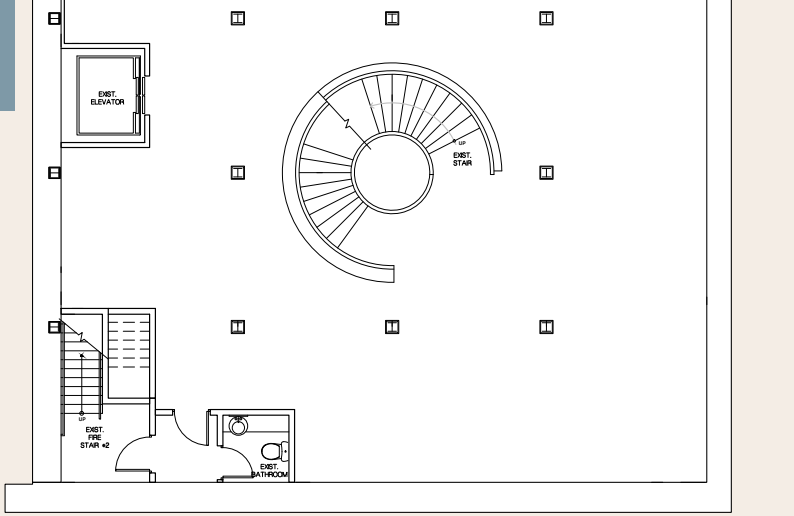
SECOND FLOOR  
4,928 SF



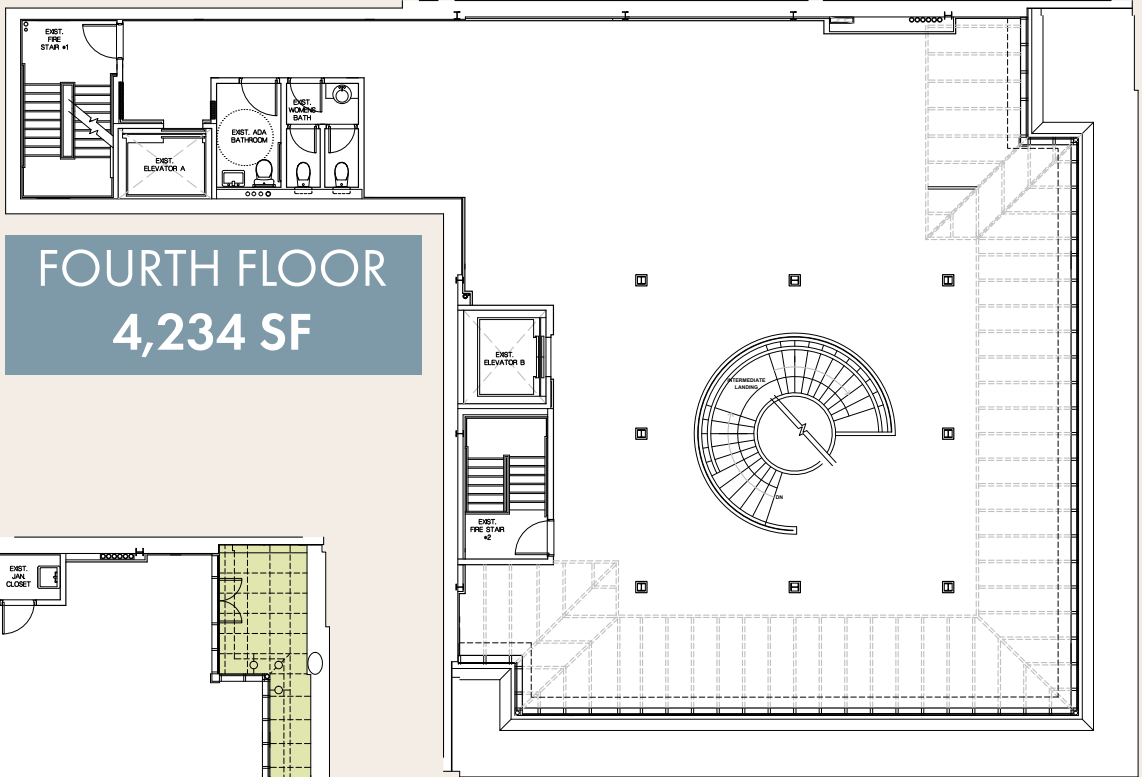
MADISON AVENUE



LOWER LEVEL  
5,010 SF

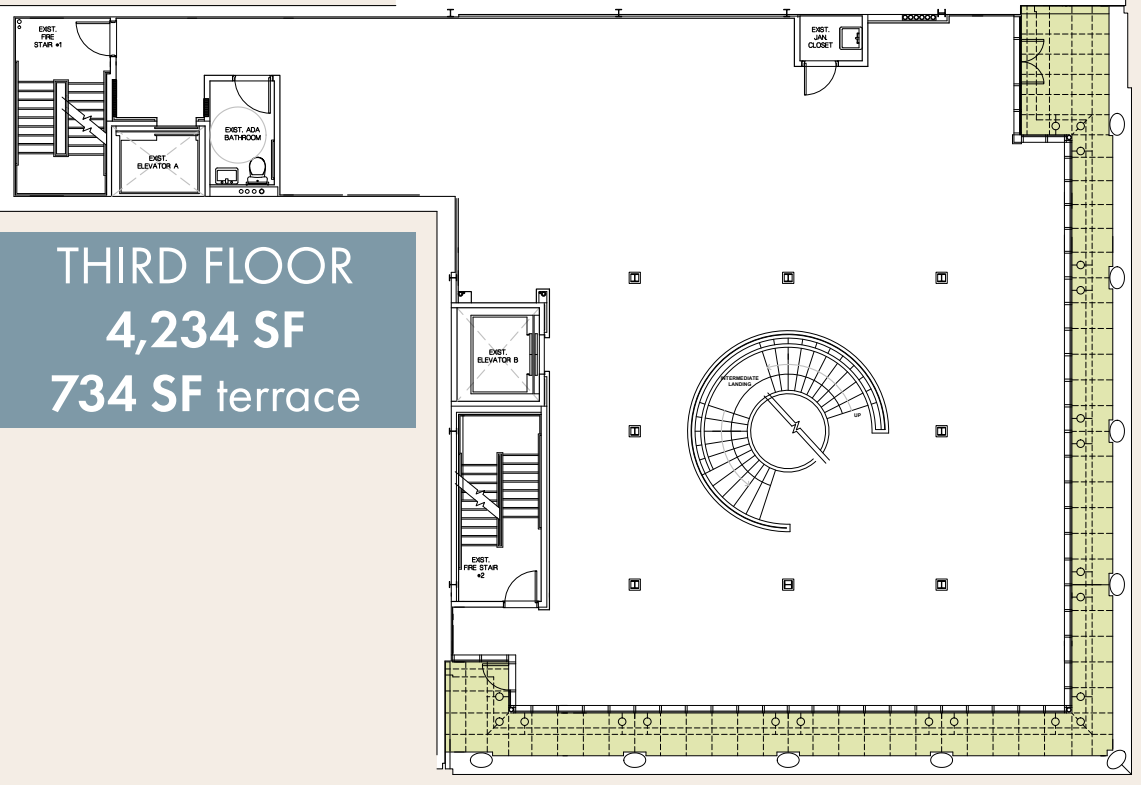


MADISON AVENUE



FOURTH FLOOR  
4,234 SF

MADISON AVENUE



THIRD FLOOR  
4,234 SF  
734 SF terrace

MADISON AVENUE

E 65<sup>th</sup> St.

Giorgio Armani

Roger Vivier

Loro Piana

Bottega Veneta

Etro — Chase Private Client

Bereita

Buccellati — De Beers

Graff

Hermès

Nello

Giusto \*

Kiton

E 63<sup>rd</sup> St.

Morgenthal Frederics — Brioni

The Carlton House

Asprey\* — Missoni

Tom Ford

E 61<sup>st</sup> St.

"200 Trunks, 200 Visionaries: The Exhibition"  
(A Louis Vuitton Concept)

Valentino \*

Tod's

Moncler

Celine

E 59<sup>th</sup> St.

Balenciaga

Tumi

Chase

Canali

E 57<sup>th</sup> St.

Dior

Bucherer TimeMachine

E 64<sup>th</sup> St.

Versace\*  
Alexander McQueen  
Morgan Lefray — Leggiadro Pomellato

Chanel

Jaeger LeCoultre (Temp)  
Anne Fontaine\*  
Ippolita\*  
Chloé  
Panerai\*  
Maison Ullens  
Paul Morelli\*  
Manolo Blanic  
Longchamp

E 62<sup>nd</sup> St.

695  
MADISON  
AVENUE

Jaeger LeCoultre  
Jimmy Choo

Brunello Cucinelli

Isabel Morant — Agent Provocateur  
Viant  
Luxura

Michael Kors\*

St. John  
Schutz

Marc Jacobs

E 60<sup>th</sup> St.

Peter Millar\*  
IWC Schaffhausen\*

Baccarat

Mont Blanc

Givenchy

Eton

Philipp Plein  
Fratelli Rosseti

Deciem  
Sermoneta Gloves  
Wolford — Ben Soleimani

E 58<sup>th</sup> St.

Fendi

\* Coming Soon



# 695 MADISON AVENUE



**MATTHEW SEIGEL**  
matthew@lanterncompany.com

**SKYE TAYLOR**  
skye@lanterncompany.com

**JUSTIN ABIZADEH**  
justin@lanterncompany.com

**+1 (646) 970-3223**  
www.lanterncompany.com

**Lantern**  
Real Estate Advisors + Partners