

# 645

## MADISON AVENUE



# SPACE A

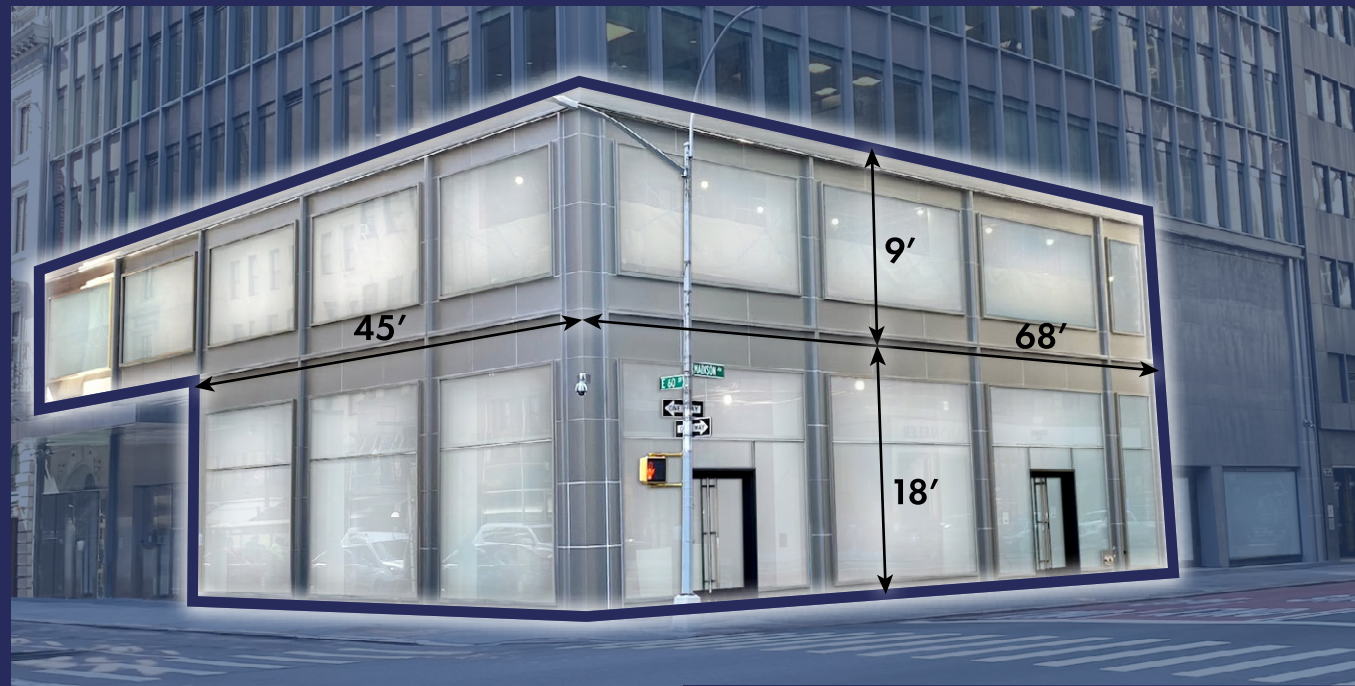
Ground Floor **4,366 SF**  
18' Ceiling Height

Second Floor **7,482 SF**  
9' Ceiling Height

Lower Level **4,355 SF**

Frontage **68'** on Madison Avenue  
**45'** on East 60<sup>th</sup> Street

Possession **Immediate**



# SPACE A

# SPACE B

Ground Floor **1,200 SF**  
18' Ceiling Height

Frontage **32'** on Madison Avenue

Possession **Immediate**



Neighboring Tenants

**Celine, Moncler, Tod's, Balenciaga, Tumi, Dior, Fendi, Marc Jacobs, Tom Ford, Brioni, Hermès**

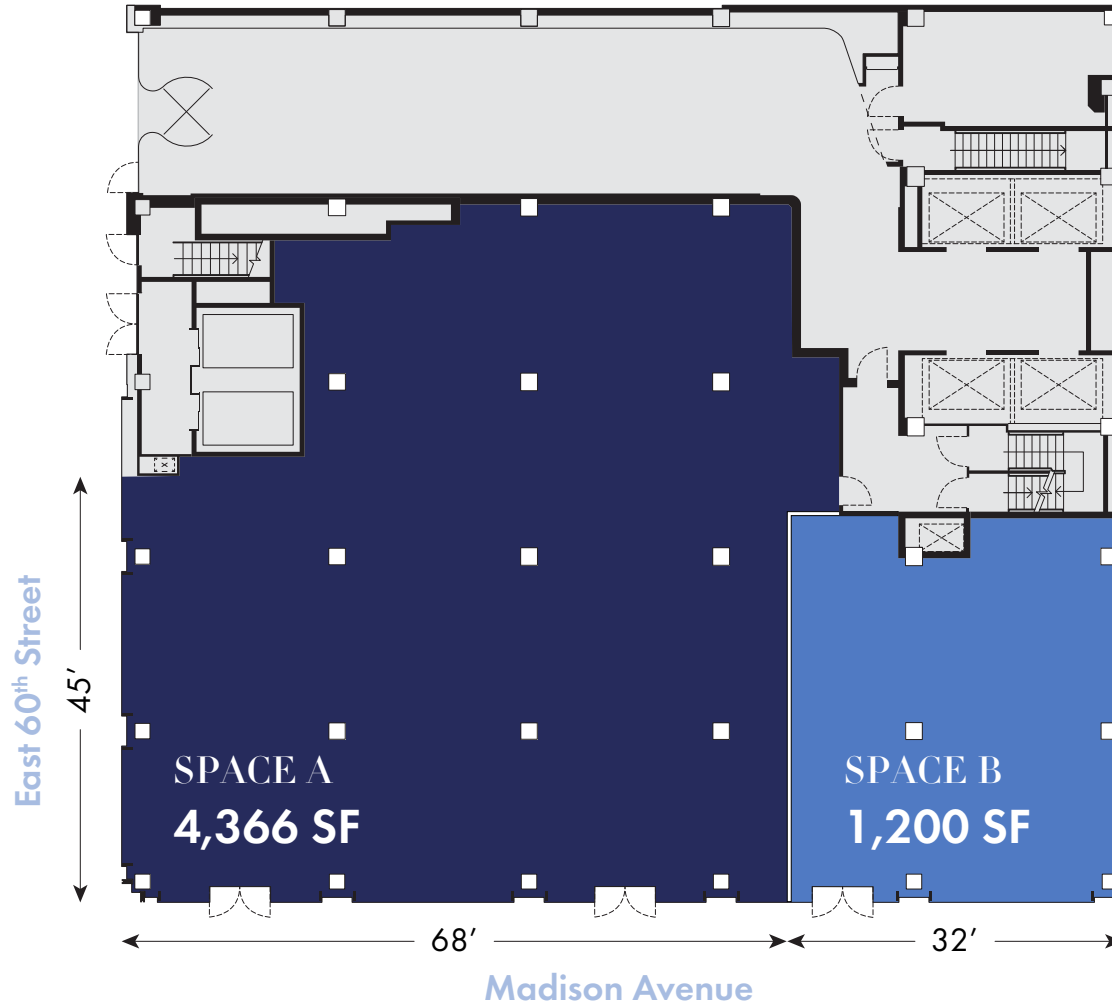
Notes

- No landmark restrictions on storefronts
- Newly renovated façade

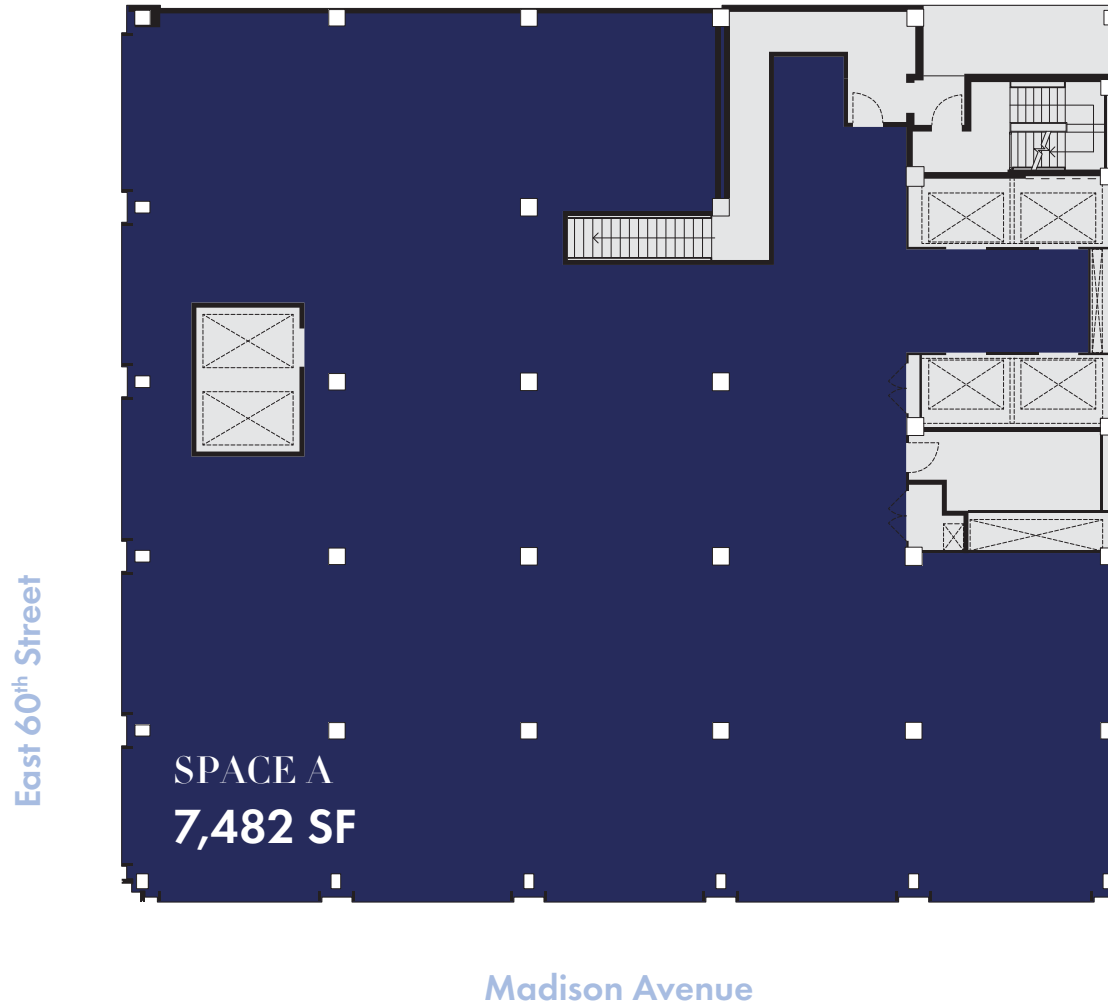
For SPACE A:

- Logical divisions considered
- Lower level is divisible

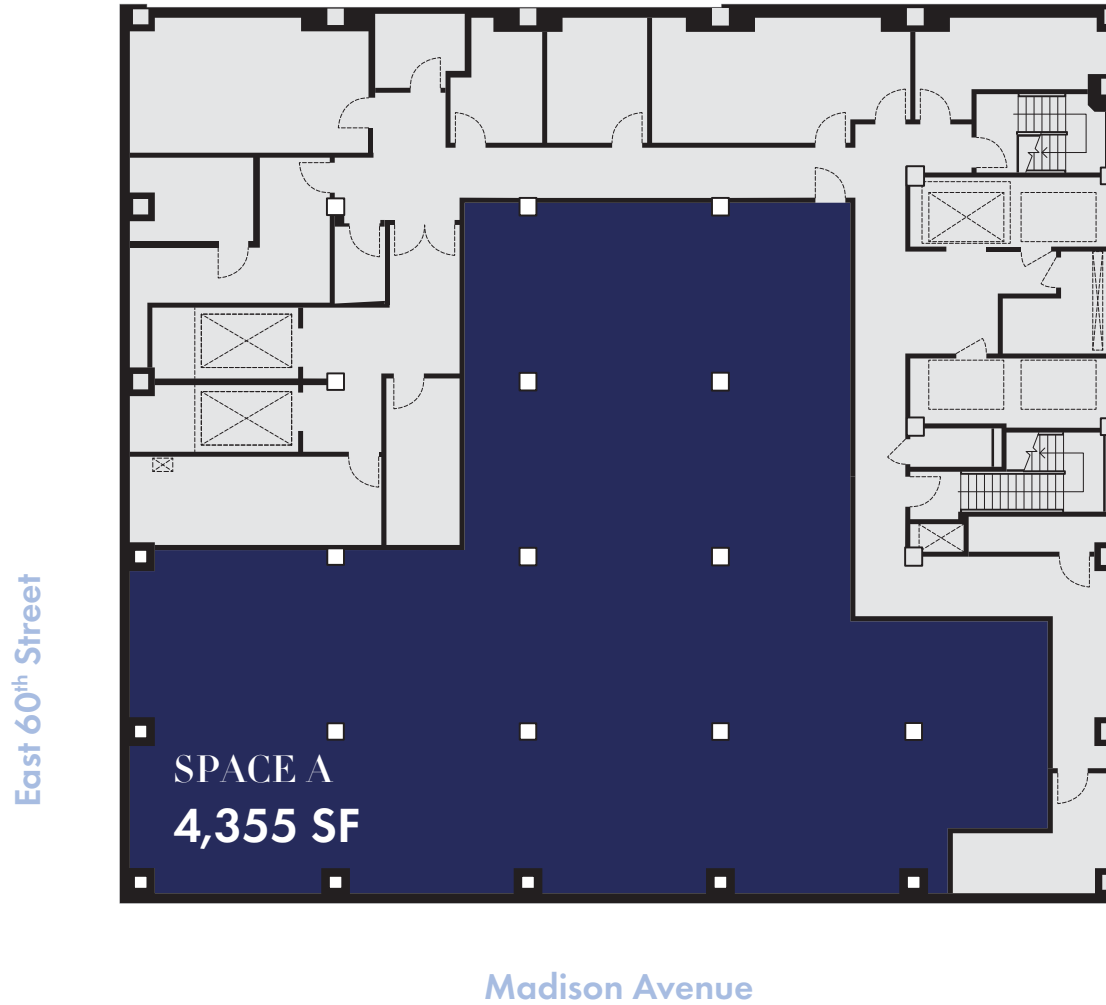
# GROUND FLOOR



# SECOND FLOOR



# LOWER LEVEL



65<sup>TH</sup> ST.

INGRAO

WILDENSTEIN & CO.

CHARLOTTE OLYMPIA

*Roger Vivier* PARIS

*Loro Piana*

BOTTEGA VENETA

Alexander McQUEEN

LEGGIADRO

POMELLATO

**CHANEL**

LEONARD TOURNE GALLERY

DRESSAGE COLLECTION

DANIEL

ILIAS LALAOUNIS

MOELLER FINE ART

HOTEL PLAZA ATHENE

NORCLAIRE SPA

TRINITY ART PAINTINGS

ALTESI RISTORANTE

CHASE PRIVATE CLIENT

**ETRO**

BERETTA

De BEERS

BUCELLATI

MILANO DAL 1920

GRAFF

MAISON ULLENS

PAULE KA

F.P. JOURNE

MANOLO BLAHNIK

**LONGCHAMP** PARIS

GARDEN HOUSE SCHOOL

FIFTH AVENUE SYNAGOGUE

ROBERT CLERGIE

CARMINE MINARDI NYC

GOYARD

DONSUKI TOWNHOUSE SALON

AMARANTH

**HERMÈS** PARIS

NELLO

**KITON**

MADISON AVE.

*Chopard*

**PANERAI**

*Jaeger-LeCoultre*

**JIMMY CHOO**

CLUB MACANUDO NYC

THE LOWELL

MAC ANDREWS & FORBES HOLDINGS, INC.

KNICKERBOCKER CLUB

PAULTZ GALLERY

*Bruno Magli*

MORGENTHAU FREDERICS

1918

THE CARLTON HOUSE

21 EAST 61<sup>ST</sup> STREET

**MISSONI**

**TOM FORD**

BRUNELLO CUCINELLI

LINKS CLUB

THE BROWNING SCHOOL

LOEWS REGENCY HOTEL

*Agent Provocateur*

**ISABEL MARANT**

teuscher

MADISON TIME

STEPHEN F. KAHAN

*Sergio Tacchini*

JULIEN FAREL

RESTORE SALON

*Saint Laurent*

THE REGENCY BAR & GRILL

SIRIO

*The Pierre* NEW YORK

*The Pierre* NEW YORK

THE METROPOLITAN CLUB

**ART HOUSE**

(BARNEYS REDEVELOPMENT)

J. SAFRA

61<sup>ST</sup> ST.

SMYTHSON

NATUROPATHICA

MARK CROSS

LIAIGRE

**Sotheby's**

THE GROUPLIER CLUB

CHRIST CHURCH METHODIST

MARC JACOBS

KARA ROSS

PHILIPPE

IL MULINO

citibank

DOMENICO VACCA

THE SHERRY NETHERLAND

**CIPRIANI**

A LA VIELLE RUSSIE

THE HARMONIE CLUB

ROTISSERIE GEORGETTE

GHURKA

DE CORATO

**TODS**

**MONCLER**

**CELINE**

60<sup>TH</sup> ST.

**fi:af**

AIR LUGGAGE

DELMONICO GOURMET

59E59 THEATERS

**NYSC**

**Capital One**

**CHASE**

**ALESSI**

GENES COFFEE SHOP

MACARON CAFE

JIM'S SHOE REPAIRING

**DUANETREAD**

MICHAEL C. FINA

**TD Bank**

**DIOR**

**BALENCIAGA**

**TUMI**

Apple

**CHASE**

MADISON AVE.

**DIESEL**

**STUART WEITZMAN**

CANALI ETON

**Wolfford**

PHILIPP PLEIN

FRATELLI ROSSETTI

**LAVO**

**DUANETREAD**

DELICATE CLEANERS

CARUSO

TRESSERRA COLLECTION

E. BRAUN & CO.

FRIEDRICH'S OPTIQUE

JAMES ROBINSON

BERGDORF GOODMAN

ALL ABOUT FOOD CAFE

Starbucks

**SAINT LAURENT** PARIS

ICONS VIRTUOS

**BURBERRY**

**MIU MIU**

**CHANEL**

**DIOR**

58<sup>TH</sup> ST.

**DECIM**

SERMONIETA GLOVES

BEN SOLEIMANI

GREEN CAFE

SERAFINA

QWIK BOUTIQUE

**TAO**

**FOUR SEASONS**

*French and Italian*

MAISON 24

ZILU

AUDEMAR'S PIQUET

**citibank**

D. PORTHAUT

645  
MADISON AVENUE

# 645

## MADISON AVENUE



**Lantern**  
Real Estate Advisors + Partners

+1 (646) 970-3223  
[www.lanterncompany.com](http://www.lanterncompany.com)

MATTHEW SEIGEL  
[matthew@lanterncompany.com](mailto:matthew@lanterncompany.com)

SKYE TAYLOR  
[skye@lanterncompany.com](mailto:skye@lanterncompany.com)

JUSTIN ABIZADEH  
[justin@lanterncompany.com](mailto:justin@lanterncompany.com)